

CASE MANAGEMENT

CDDP / Brokerage Perspective:

Increasing workloads and decreasing budgets mean we have less time to support people to live full lives in their communities.



Continue to fund I/DD case management at 95% equity so that Oregonians with I/DD can remain safe and supported at home, work and in the community.

Community Developmental Disabilities Services (CDDP) and Support Services Brokerages coordinate services to help people with IDD live their lives to the fullest.

Self-Advocate Perspective:

When case managers are asked to do more with less, it impacts when and if I get the supports I need when I need them.



Case Manager Perspective:

Without time to get to know someone, it is hard to connect them with services so they can be independent, healthy and safe.

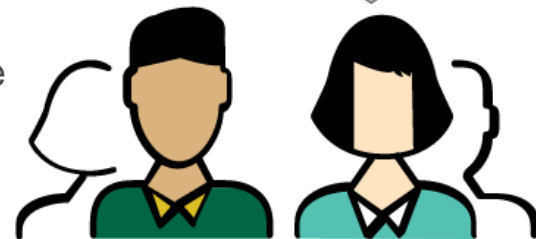


Oregon saves significant money by contracting case management to these organizations instead of doing the work directly.

All 26,000 people receiving IDD Services in Oregon are served through one of the 34 CDDPs or 14 Support Services Brokerages.

Family Perspective:

If my child's case manager is overloaded, they cannot help me navigate the best services for my family.



Everyone deserves to be a part of their community.

People with Intellectual / Developmental Disabilities are most successful in their communities when they can access a variety of services that embrace the diversity of people's needs and goals across their lifespan.